

Our year of impact

2020-2021

The Sexual Assault & Family Violence Centre (The SAFV Centre) *Our year of impact 2020-2021* highlights the strength of our clients and our work, our achievements and challenges, and the impact we have had on our communities in which we support.

The SAFV Centre is a community based, not-for-profit service, offering free, confidential trauma-informed sexual assault and family violence services across the Barwon, Wimmera and Western Melbourne areas of Victoria.

Operating for over 43 years in the Barwon area and in the Wimmera district, we are a trusted specialist organisation supporting our communities in need, offering 24-hour crisis care across a range of pathways to recovery, including immediate brief support, case management, court support, therapeutic counselling, therapeutic groups, Body and Mind programs, trauma-informed yoga and early intervention programs, to people impacted by sexual assault and family violence.

As one of the largest standalone specialist sexual assault and family violence organisations in Victoria, with more than 100 employees, we provide free and confidential case management support to women, children and young people experiencing family violence.

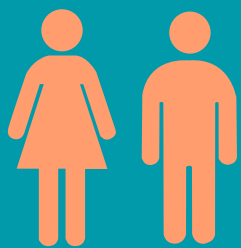
We also provide free and confidential trauma-informed counselling and a range of therapeutic group programs to address the impacts of trauma from sexual assault and family violence.

We offer professional training and our Primary Prevention team designs and delivers innovative projects which are informed by and contribute to the evidence base about what works to prevent violence from occurring in the first place.

We are committed to our vision for a community free from family violence and sexual assault, and a society underpinned by the principles of gender equality, social justice and human rights. Our values of Respect, Integrity, Innovation, Collaboration and Commitment unite us, guiding our decisions and actions in our roles, every day.

Our year of impact 2020-2021 provides a snapshot of our achievements throughout the past financial year, highlighting the innovation, strength and dedication of our clients, staff and the community. For a full copy of our 2021 Annual Report, please visit www.safvcentre.org.au

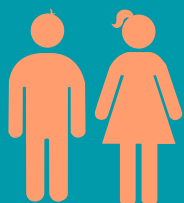
Year in review



4,346 clients were supported across The SAFV Centre.

2,597 adults, children & young people received a therapeutic service including counselling and group programs.

1,162 women, children & young people received family violence case management support.



129 children and young people received therapeutic treatment for problem sexual and sexually abusive behaviours.



438 clients were supported in the Wimmera region.

220 clients supported in the Colac area.



504

women received court support when applying for Family Violence Intervention Orders in the Barwon area.



140

women and children received a Flexible Support Package in the Barwon area.



5,622

cases that our staff at The Orange Door Barwon supported.



636

participants attended our professional and primary prevention training.



103

staff employed at 30 June 2021.

Ongoing impact of the global pandemic

For the past 12 months, the impact of the global pandemic has transformed the way we delivered our services and changed how we lived in our homes and participated in the community.

We are yet to see the full impact that the COVID-19 pandemic and restrictions have had on the community but we do know that there has been a significant increase and exacerbation of family violence and sexual assault over the past 12 months.

Key insights

- a 3% increase in total clients supported.
- a 20% increase in requests for support from women, children and young people for family violence case management.
- a 31% increase in children (aged 0–11 years) and a 26% increase in young people (aged 12–17 years) accessing support during this period for family violence case management.
- the introduction of webchat as a channel for the community to reach out safely and seek support.
- the use of Health Direct to maintain connection with clients.
- staff engagement initiatives and opportunities introduced to virtually connect.



“The beauty of the online channel is that you can see inside their lives and what’s really happening, not just what they are telling you and this has been really important in my connections with younger clients.”

Primary Prevention

The prevalence of violence against women is unacceptably high: one in three Australian women have experienced physical or sexual violence and/or emotional abuse in their lifetime.

Primary Prevention aims to prevent violence before it happens. It helps change attitudes, behaviours and complacency. It shakes up the systems that tolerate, justify or excuse violence. This year we continued our work towards preventing sexual and family violence, by working together across homes, workplaces, schools and social groups to address its main driver – gender inequality.

Key achievements

- Successful grant application from Give Where You Live to enable our organisation to deliver a prevention education program with the Bannockburn Football & Netball Club in early 2022.
- Delivering our Wellbeing and Sustainability for Primary Prevention Practitioners training twice to practitioners across the state.



"I never knew that moral distress was an actual 'thing' that we experienced and thinking about how this then applies to the work we are going to have to do as an organisation around gender equality."

Support and Resources

Drawing on over 43 years of working with people experiencing sexual assault and women and children experiencing family violence, The SAFV Centre staff have a wealth of experience and expertise, along with knowledge of the drivers of sexual assault and family violence.

This year, we continued to place the experiences of those impacted by sexual assault and family violence at the heart of our programs and our support.

Key achievements

- The launch of our Youth-focused group program - TACT-Y.
- Reworking of our group programs into an online format and delivering to more than 100 clients - both women and children.
- Creating an online Body and Mind Program for clients to engage at home with through videos.
- 430 secondary consultations to professionals and practitioners.
- 55% increase in the amount of women receiving court support when applying for Family Violence Intervention Orders, with almost 600 children accompanying these women.
- More than 80 clients aged between 10-17 years supported through our Step Up program.



"The CMiM group has been the missing puzzle piece in healing after escaping my abuser. To be connected with other mothers whom all have the lived experience as I do and the way that the Counsellors conducted the program was nothing short of validating, supportive and nurturing."

Evidence

Advocating on behalf of our clients, we are committed to informing and influencing policy, legislation and community attitudes. We actively lead and participate in research, service evaluation and quality assurance processes to strengthen our specialist service response.

Key achievements

- Evaluation of our virtual services with support from the Nous Group to understand the impact of the use of the online platforms to deliver our client services during COVID-19.
- Increases in the number of clients disclosing co-occurrence of family violence and sexual assault.
- Community activism and advocacy



Partnerships

Working respectfully and collaboratively with our partners, we maintain an awareness of the prevalence of sexual assault and family violence within the community and the importance of gender equality, while highlighting the support services available.

Key achievements

- Successful in our submission for the Family Violence and Disability Practice Leader initiative.
- Pivoted our training to an online service, with outstanding engagement and feedback.
- Commenced our engagement with Diversitat to deliver family violence awareness and early intervention with multicultural communities.
- Successful in the Family Safety Victoria's new Rural and Regional Family Violence Social Work Graduate program.
- Led and co-ordinated the delivery of the MARAM Collaborative Practice training in the Barwon area, in collaboration with Bethany Community Support and Victoria Police.
- Designed and delivered a new training module – Family Violence and Sexual Assault – Understanding and Responding.
- Provided additional support to more than 380 clients in our region, distributing gift cards and items valued at more than \$55,000.



"It is through tears of gratitude I am writing to say, thank you so much for this incredible gift. I am truly blessed to have the support of such a wonderful team on such a challenging journey and wow, what a surprise to be the recipient of such generosity – thank you!"

Sustainability

We acknowledge and share our deep appreciation to each and every staff member throughout this year. It has been a year of change and uncertainty, and their commitment to our clients and our community, each other and our organisation has been phenomenal.

Key achievements

- Supported staff to continue to work from home during lockdowns and ensure a safe space when working onsite.
- Maintained staff engagement through connection and employee-first initiatives.
- Streamlined and capable processes and systems to support our people.
- Submitted our first Workplace Gender Equality report.

